



F-1002M_J(-C)


Modular Ice Machine Slim-Line Series




F-1002M_J(-C)
03/31/17
Item # 13108A

Item #: _____
 Project: _____
 Qty: _____
 AIA#: _____

Features

- ▶ Durable stainless steel exterior
- ▶ Advanced CleanCycle24™ design 
- ▶ Stainless steel auger with greaseless bearing

- Flaker - Up to 980 lbs. of ice production per 24 hrs.
- Cubelet - Up to 890 lbs. of ice production per 24 hrs.
- Infrared bin control for easy cleaning and reliability
- Protected by H-GUARD Plus Antimicrobial Agent 
- 2 second flush cycle every hour
- Flush cycle removes sediment for cleaner ice
- Mount two units, side-by-side, in only 44" of floor space for double the amount of ice production
- R-404A Refrigerant

Available on Bins:

B-250PF B-500PF/SF B-800PF/SF B-1150SS B-1500SS*
 B-300PF/SF B-700PF/SF B-900PF/SF B-1300SS B-1650SS*

*Top kit may be required; See Bin Spec Sheets. *Two unit application only.*

Warranty:

3 Year Parts & Labor on entire machine. 5 Year Parts on Compressor; air-cooled condenser coil. Valid in United States, Canada, Puerto Rico and U.S. Territories. Contact factory for warranty in other countries.

W x D x H
22" x 27^{3/8}" x 26"

F-1002MAJ ★
Air-Cooled Flaker
Shown on optional bin B-700

F-1002MWJ
Water-Cooled Flaker

F-1002MRJ ★
Remote Air-Cooled Flaker

F-1002MAJ-C ★
Air-Cooled Cubelet

F-1002MWJ-C
Water-Cooled Cubelet

F-1002MRJ-C ★
Remote Air-Cooled Cubelet



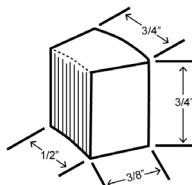
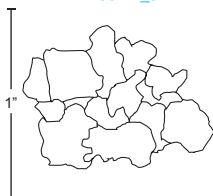
Condenser	Model	ICE PRODUCTION			WATER USAGE			ELECTRICAL			Heat Rejection BTU/hr.	Shipping Weight	ENERGY STAR®
		Air / Water Temp Lbs. per 24 hours 70°/ 50°F 90°/ 70°F	Type of Ice (Hardness Rating)	Potable Gal. per 100 lbs. 90°/ 70°F	Condenser Gal. per 100 lbs. 90°/ 70°F	kWh Used per 100 lbs. 90°/ 70°F	Max. Fuse Size or HACR Circuit Breaker	Amperage	Voltage				
Air-Cooled	F-1002MAJ	980 758	Flaked (80.1)	12.0	N/A	4.36	20A	15.2A	115V/60/1	8,500	210 lbs.	★	
Water-Cooled	F-1002MWJ	955 833	Flaked (76.8)	12.0	110	3.57	20A	13.7A	115V/60/1	8,200	205 lbs.		
Remote Air-Cooled	F-1002MRJ	907 722	Flaked (79.5)	12.0	N/A	4.51	20A	15.2A	115V/60/1	8,600	210 lbs.	★	
Air-Cooled	F-1002MAJ-C	890 726	Cubelet (87.1)	12.0	N/A	4.57	20A	15.2A	115V/60/1	8,700	210 lbs.	★	
Water-Cooled	F-1002MWJ-C	878 770	Cubelet (84.6)	12.0	111.0	3.95	20A	13.7A	115V/60/1	8,200	205 lbs.		
Remote Air-Cooled	F-1002MRJ-C	821 680	Cubelet (85.9)	12.0	N/A	4.94	20A	15.2A	115V/60/1	8,500	210 lbs.	★	

Ice machines must be hard-wired at site.

Cube Dimensions*

Flaked
F-1002M_J

Cubelet
F-1002M_J-C



* approximate size in inches, image not to scale

Operating Limits

- Ambient Range 45 - 100°F
- Water Temp Range 45 - 90°F
- Water Pressure 10 - 113 PSIG
- Voltage Range 104-127V

Service

- Panels easily removed and all components accessible for service.
- Allow 24" (61 cm) clearance at top for removal of auger and 6" (15 cm) clearance at rear and sides for proper air circulation and ease of maintenance/service.

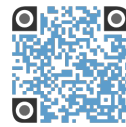
Plumbing

- Icemaker Water Supply Line: Minimum 1/4" Nominal ID Copper Water Tubing or Equivalent
- Icemaker Drain Line: Minimum 3/4" Nominal ID Hard Pipe or Equivalent
- Water-Cooled Model (Lines Must Be Independent of Icemaker)
- Condenser Water Supply Line: Minimum 1/4" Nominal ID Copper Water Tubing or Equivalent
- Condenser Drain/Return Line: Minimum 1/4" Nominal ID Hard Pipe (open drain system) or Copper Water Tubing (closed loop system) or Equivalent



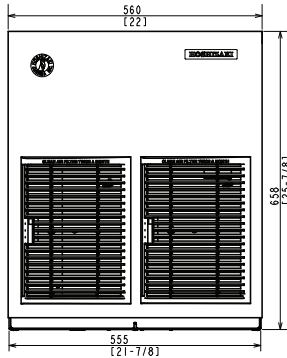
F-1002M_J(-C)

Modular Ice Machine
Slim-Line Series

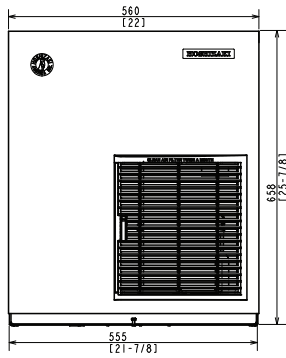


F-1002M_J(-C)
03/31/17
Item # 13108A

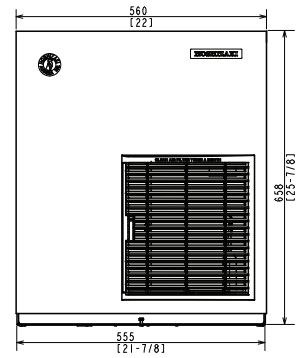
FRONT VIEW



AIR-COOLED



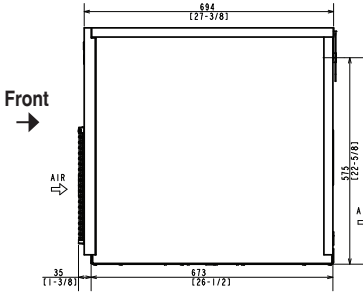
WATER-COOLED



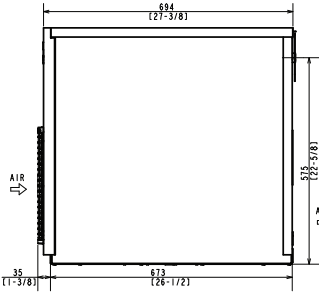
REMOTE AIR-COOLED

mm
[inch]

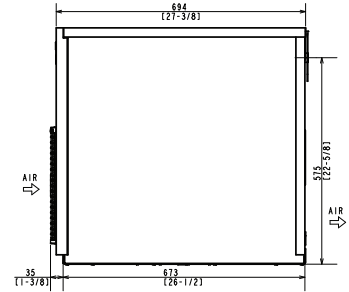
SIDE VIEW



AIR-COOLED

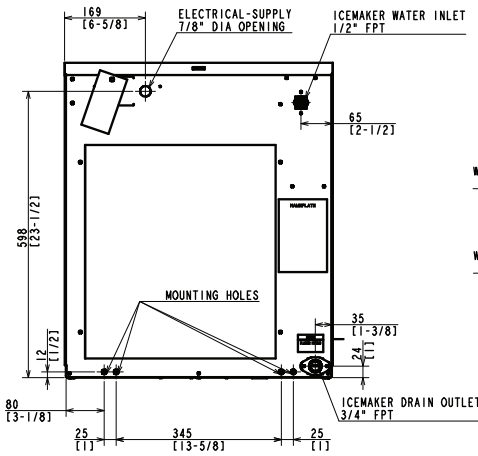


WATER-COOLED

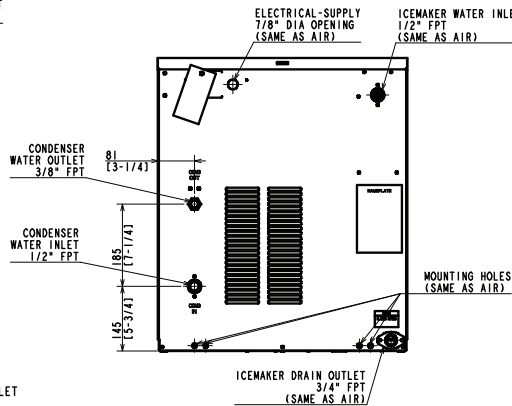


REMOTE AIR-COOLED

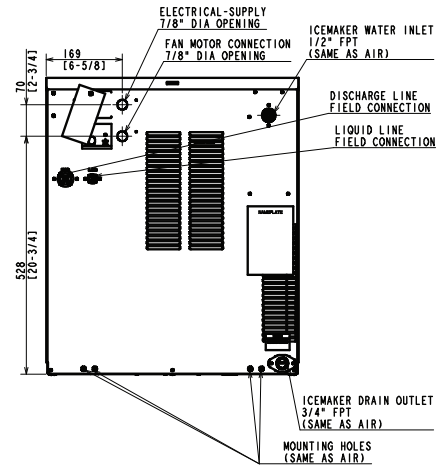
REAR VIEW



AIR-COOLED

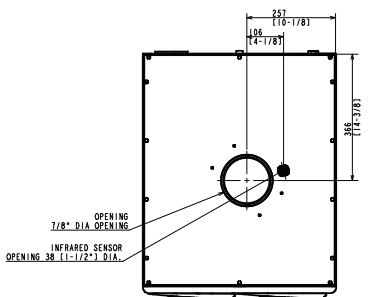


WATER-COOLED

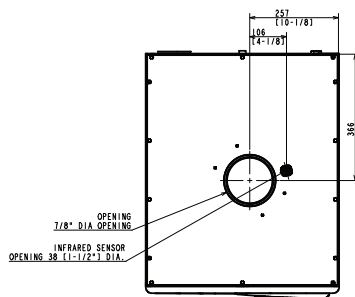


REMOTE AIR-COOLED

BOTTOM VIEW



AIR-COOLED



WATER-COOLED
REMOTE AIR-COOLED



Pre-Charged Tubing Kits
(Sold Separately)
20' R404-2046-2
35' R404-3546-2
Voltage supply for the URC
Remote Condenser is supplied
from the Ice Maker.
No additional circuit is required.

URC-5F Remote Condenser (Sold Separately)
(W x D x H) 21 13/16 x 14 1/16 x 32 13/16
For Use with F-1002MRJ(-C)

